

## Chapter 2 – Consumer's Equilibrium

### Question 1

**Define Total Utility.**

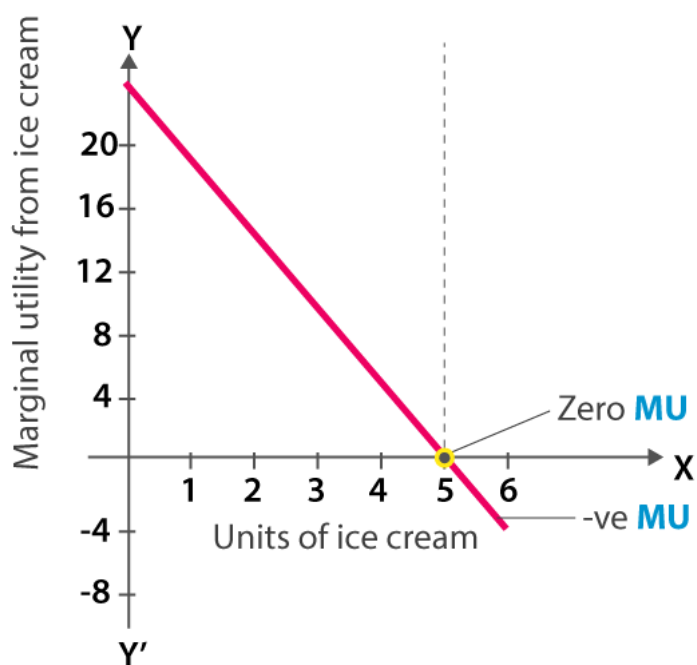
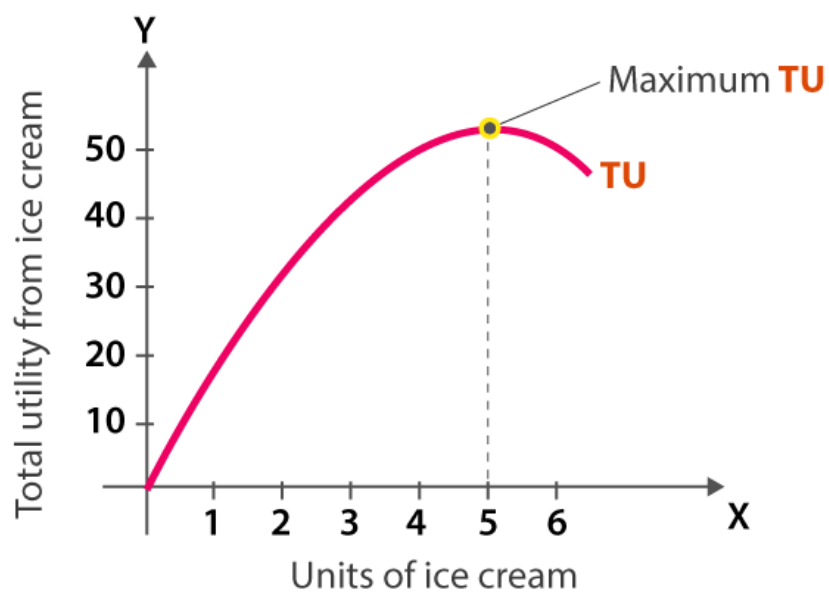
**Ans:** Total Utility refers to the total satisfaction obtained from the consumption of all possible units of a commodity.

### Question 2

**Explain how the Total Utility and Marginal Utility are calculated, by using graphical representation.**

Ice Creams consumed	Marginal Utility (MU)	Total Utility (TU)
1	20	20
2	16	36
3	10	46
4	4	50
5	0	50
6	-6	44

**Solution:**



### Question 3

**Explain the Law of Diminishing Utility.**

**Ans:** The Law of Diminishing Utility (LDMU) states that as we consume more and more units of a commodity, the utility derived from each successive unit goes on decreasing.

### Question 4

**Mention 4 Assumptions of Law of Diminishing Utility.**

**Ans:** The 4 assumptions of Law of Diminishing Utility are:

- Rational Consumer
- Perfect Knowledge
- Fixed Income and prices
- Independent utilities

### **Question 5**

#### **What is Indifference Curve?**

**Ans:** Indifference Curve refers to the graphical representation of various alternatives combinations of bundles of 2 goods among which the consumer is indifferent.

### **Question 6**

#### **Expand MRS.**

**Ans:** MRS stands for Marginal Rate of Substitution.

### **Question 7**

#### **Give 3 Assumptions of Indifference Curve.**

**Ans:** The three assumptions of indifference curve are :

- Non-satiety
- 2 commodities
- Ordinal Utility