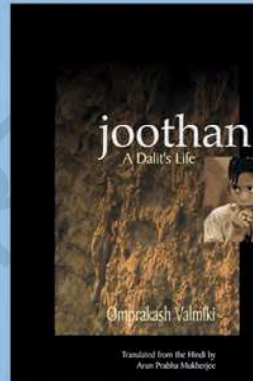




0764CH09



Struggles for Equality

In this book, you have read about people like Kanta, the Ansaris, Melani and Swapna. The thread that connects all of these lives is that they have been treated unequally. What do people do when they face such inequalities? History is full of examples of persons who have come together to fight against inequality and for issues of justice. Do you recall the story of Rosa Parks in Chapter 1? Do you remember the photo-essay on the women's movement in Chapter 5? In this chapter you will learn about some of the ways in which people have struggled against inequality.



As you have already read in this book, the Indian Constitution recognises all Indians as equal before the law and states that no person can be discriminated against because of their religion, sex, caste or whether they are rich or poor. All adults in India have the equal right to vote during elections and this 'power over the ballot box' has been used by people to elect or replace their representatives.

But this feeling of equality that the ballot box provides, because the vote of one person is as good as that of another, does not extend to most people's lives. As you have read, the increasing privatisation of health services and the neglect of government hospitals have made it difficult for most poor people like Kanta, Hakim Sheik and Aman to get good quality health care. These people do not have the resources to afford expensive private health services.

Similarly, the man who sells juice does not have the resources to compete with all of the major companies who sell branded drinks through expensive advertising. Swapna does not have sufficient resources to grow cotton and, so, has to take a loan from the trader to grow her crop. This forces her to sell her cotton at a lower price. Melani, like the millions of domestic workers across the country, is forced to endure the insults and hardship of working as a domestic help because she has no resources to set up something on her own. **Poverty and the lack of resources continue to be a key reason why so many people's lives in India are highly unequal.**

On the other hand, the Ansaris were discriminated against not because they did not have the resources. In fact, despite having the money to pay the required rent, they were not able to find an apartment for over a month. People were reluctant to lease them an apartment because of their religion. Similarly, the main reason that the teachers forced Omprakash Valmiki to sweep the school yard was because he was *Dalit*. You've also read that the work women do

What do you think is meant by the expression 'power over the ballot box'? Discuss.



Sustainable Development Goal (SDG)
www.in.undp.org

In India, it is the case that the poor consist of a majority of members of Dalit, Adivasi and Muslim communities and are often women.

According to the 2011 Census data women form 48.5 per cent of the population, Muslims form 14.2 per cent of the population, SCs form 16.6 per cent and STs 8.6 per cent.



Sustainable Development Goal (SDG)
www.in.undp.org

Can you think of one person in your family, community, village, town or city whom you respect because of their fight for equality and justice?

is often considered of less value than that done by the men. All of these persons are discriminated against primarily because of their social and cultural background as well as because they are women. **Discrimination on the basis of a person's religion, caste and sex is another significant factor for why people are treated unequally in India.**

Often, poverty and lack of dignity and respect for certain communities and groups come together in such powerful ways that it is difficult to identify where one aspect of inequality ends and the other begins. As you have read, *Dalit*, *Adivasi* and Muslim girls drop out of school in large numbers. This is a combined outcome of poverty, social discrimination and the lack of good quality school facilities for these communities.

Struggles for equality

Throughout the world – in every community, village, city and town—you will find that there are some people who are known and respected because of their fight for equality. These people may have stood up against an act of discrimination that they faced or which they witnessed. Or they may be well-respected because they treat all persons with dignity and are, therefore, trusted and called upon to resolve issues in the community.

Often, some of these persons become more widely recognised because they have the support or represent large numbers of people who have united to address a particular issue of inequality. In India, there are several struggles in which people have come together to fight for issues that they believe are important. In Chapter 5, you read about the methods used by the women's movement to raise issues of equality. The Tawa Matsya Sangh in Madhya Pradesh is another example of people coming together to fight for an issue. There are many such struggles such as those among *beedi* workers, fisherfolk, agricultural

labourers, slum dwellers and each group is struggling for justice in its own way. There are also many attempts to form cooperatives or other collective ways by which people can have more control over resources.

Tawa Matsya Sangh

When dams are built or forest areas declared sanctuaries for animals, thousands of people are displaced. Whole villages are uprooted and people are forced to go and build new homes, start new lives elsewhere. Most of these people are poor. In urban areas too, *bastis* in which poor people live are often uprooted. Some of them are relocated to areas outside the city. Their work as well as their children's schooling is severely disrupted because of the distance from the outskirts of the city to these locations.

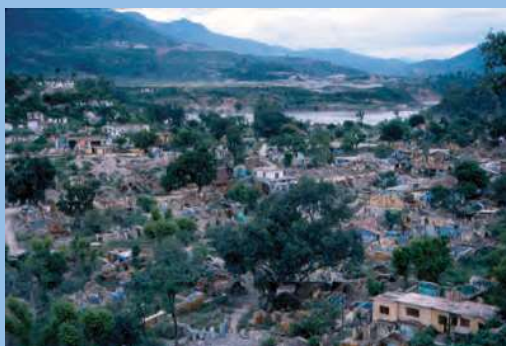
This displacement of people and communities is a problem that has become quite widespread in our

The reservoir of the Tawa river.



country. People usually come together to fight against this. There are several organisations across the country fighting for the rights of the displaced. In this chapter we will read about the Tawa Matsya Sangh – a federation of Fisherworker’s cooperatives – an organisation fighting for the rights of the displaced forest dwellers of the Satpura forest in Madhya Pradesh.

Originating in the Mahadeo hills of Chindwara district, the Tawa flows through Betul, before joining the Narmada in Hoshangabad. The Tawa dam began to be built in 1958 and was completed in 1978. It submerged large areas of forest and agricultural land. The forest dwellers were left with nothing. Some of the displaced people settled around the reservoir and apart from their meagre farms found a livelihood in fishing. They earned very little.



A dam is built across a river at sites where one can collect a lot of water. This forms a reservoir and as the water collects it submerges vast areas of land. This is because the wall of the dam across the river is high and the water spreads over a large area. This is a photo of the submergence caused by the Tehri dam in Uttarakhand. The old Tehri town and 100 villages, some totally and some partially, were submerged by this dam. Nearly one lakh people were displaced.

What issue is the Tawa Matsya Sangh (TMS) fighting for?

Why did the villagers set up this organisation?

Do you think that the large-scale participation of villagers has contributed to the success of the TMS? Write two lines on why you think so.

In 1994, the government gave the rights for fishing in the Tawa reservoir to private contractors. These contractors drove the local people away and got cheap labour from outside. The contractors began to threaten the villagers, who did not want to leave, by bringing in hoodlums. The villagers stood united and decided that it was time to set up an organisation and do something to protect their rights.

The newly formed Tawa Matsya Sangh (TMS) organised rallies and a *chakka jam* (road blockade), demanding their right to continue fishing for their



livelihood. In response to their protests, the government created a committee to assess the issue. The committee recommended that fishing rights be granted to the villagers for their livelihood. In 1996, the Madhya Pradesh government decided to give to the people displaced by the Tawa dam the fishing rights for the reservoir. A five-year lease agreement was signed two months later. On January 2, 1997, people from 33 villages of Tawa started the new year with the first catch.

With the TMS taking over the fishworkers were able to increase their earnings substantially. This was because they set up the cooperative which would buy the catch from them at a fair price. The cooperative would then arrange to transport and sell this in markets where they would get a good price. They have now begun to earn three times more than they earned earlier. The TMS has also begun giving the fishworkers loans for repair and the buying of new nets. By managing to earn a higher wage as well as preserving the fish in the reservoir, the TMS has shown that when people's organisations get their rights to livelihood, they can be good managers.



Top: Members of the TMS protesting at a rally. Above: A member of the cooperative weighing the fish.

Can you think of an incident in your life in which one person or a group of people came together to change an unequal situation.



Over 1,500 persons attended a public hearing in Lucknow in 2001 to protest violence against women. Over 15 cases of violence against women were heard by a jury of eminent women who played the role of judges. This people's jury helped highlight the lack of support in the legal system for women who seek justice in such cases.

Issues of equality are central to a democracy. In this book, we have tried to highlight issues that pose a challenge to this idea of equality in a democracy. These, as you have read, include the privatisation of health services in the country, the increasing control that business houses exert on the media, the low value given to women and their work, and the low earnings made by small farmers who grow cotton. These issues substantially affect poor and marginalised communities, and therefore, concern economic and social equality in the country.

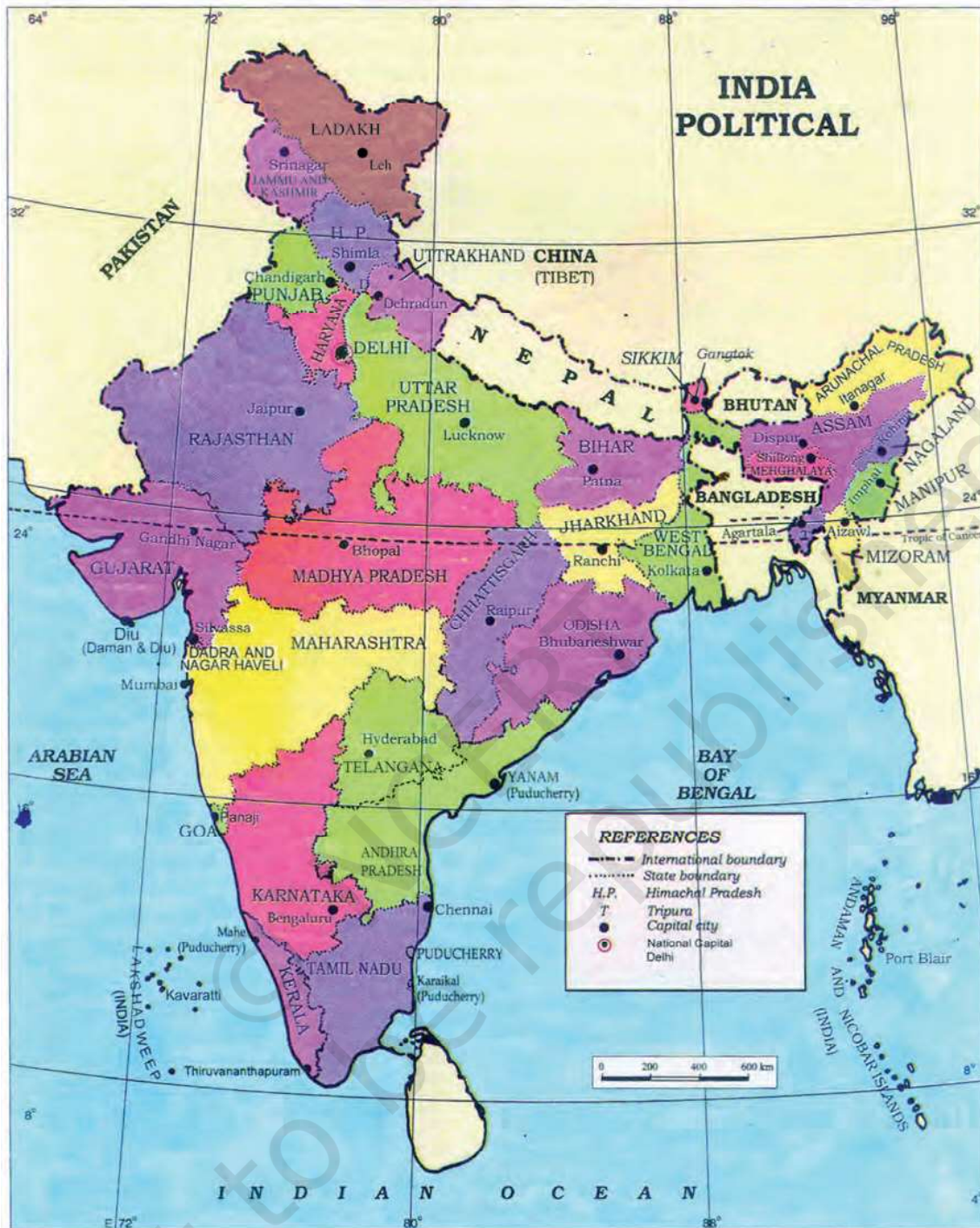
This is the core of the struggle for equality in a democracy. The dignity and self-respect of each person and their community can only be realised if they have adequate resources to support and nurture their families and if they are not discriminated against.

What role does the Constitution play in people's struggles for equality?

Can you make up a social advertisement on equality? You can do this in small groups.

References

- ◆ Dreze, Jean and Aparajita Goyal. 2003. 'Future of Mid-day Meals'. In *Economic and Political Weekly*.
- ◆ Hossain, Sakhawat Rokeya. 1905. (reprint) 1988. *Sultana's Dream*. Feminist Press, New York.
- ◆ Kumar, Krishna. 1986. "Growing Up Male" in *Seminar 318*.
- ◆ Mazumdar, Indrani. 2007. *Women and Globalization: The Impact on Women Workers in the Formal and Informal Sectors in India*. Stree, Kolkata.
- ◆ Mead, Margaret. 1928, 1973. (edition) *Growing Up In Samoa*. American Museum of Natural History, Washington D.C.
- ◆ Medical Council of India, <http://www.mciindia.org/Rules-and-Regulation/Ethics%20Regulations-2002.pdf>
- ◆ Parks, Rosa. 2000. *Quiet Strength*. Grand Rapids, Zondervan, Michigan.
- ◆ Rashsundari Devi. 1999. *Words to Win*. Translated and with an introduction by Tanika Sarkar. Zubaan, New Delhi.
- ◆ Roy, Tirthankar. 1999. 'Growth and Recession in Small-Scale Industry: A Study of Tamil Nadu Powerlooms' *Economic and Political Weekly*.
- ◆ Supreme Court of India, *Paschim Banga Khet Mazdoor Samity of Ors. Vs. State of West Bengal & Anr.* (Hakim Seikh case, date of judgment: 6 May 1996, <http://judis.nic.in/supremecourt/imgs1.aspx?filename=15597>)
- ◆ Valmiki, Omprakash. 2003. *Joothan: A Dalit's Life*. SAMYA, Kolkata.
- ◆ World Health Organization, *Essential medicines and health products*, <http://www.who.int/medicines/services/inn/en/>
- ◆ www.cehat.org/rthc/policybrieffinal.pdf
- ◆ www.in.undp.org (Sustainable Development Goals – SDGs)
- ◆ www.infochangeindia.org
- ◆ Zubaan. 1996. *Poster Women: A Visual History of the Women's Movement in India*. Zubaan, New Delhi.



1. The responsibility for the correctness of internal details rests with the publisher.
2. The territorial waters of India extend into the sea to a distance of twelve nautical miles measured from the appropriate base line.
3. The administrative headquarters of Chandigarh, Haryana and Punjab are at Chandigarh.
4. The interstate boundaries amongst Arunachal Pradesh, Assam and Meghalaya shown on this map are as interpreted from the "North Eastern Areas (Reorganisation) Act, 1971," but have yet to be verified.
5. The external boundaries and coastlines of India agree with the Record / Master Copy certified by Survey of India.
6. The state boundaries between Uttarakhand & Uttar Pradesh, Bihar & Jharkhand and Chhattisgarh & Madhya Pradesh have not been verified by the Governments concerned.
7. The spellings of names in this map have been taken from various sources.

SCHOOL ROAD SAFETY AWARENESS CAMPAIGN



Delhi Traffic Police is organising
School Road Safety Awareness Campaign
from 6th October 2016 to January 2017

The Students will be imparted knowledge regarding :
★ Traffic Rules ★ Road Signs ★ Signals ★ Road Markings

Attractive Prizes

Painting competitions for Junior to Secondary level school children
Debate and Quiz competitions for Middle and Secondary levels
Final round of competitions and prize distribution ceremony to be held in January 2017 during National Road Safety Week.

Approx 10 Lakh School Children from over 850 Schools will be participating



DELHI POLICE
SHANTI • SEWA • NYAYA



<https://twitter.com/dtptraffic>



<https://www.facebook.com/dtptraffic>

24 Hours Traffic Helpline : 011-25844444, 1095

Have you participated in any event related to school road safety?

For materials about road safety education, log on to <http://delhitrafficpolice.nic.in>

Ministry of Road Transport and Highways, <http://morth-roadsafety.nic.in>

For short films on road safety, log on to <http://transport.telangana.gov.in>