

# Alternating Current

## Multiple Choice Questions (MCQs)

**Q. 1** If the rms current in a 50 Hz AC circuit is 5 A, the value of the current  $1/300$  s after its value becomes zero is

- (a)  $5\sqrt{2}$  A (b)  $5\sqrt{3/2}$  A  
(c)  $5/6$  A (d)  $5/\sqrt{2}$  A

**Ans. (b)** Given,  $v = 50$  Hz,  $I_{\text{rms}} = 5$  A  
 $t = \frac{1}{300}$  s

We have to find  $I(t)$

$$I_0 = \text{Peak value} = \sqrt{2}, \quad I_{\text{rms}} = \sqrt{2} \times 5 \\ = 5\sqrt{2} \text{ A}$$

$$I = I_0 \sin \omega t = 5\sqrt{2} \sin 2\pi vt = 5\sqrt{2} \sin 2\pi \times 50 \times \frac{1}{300} \\ = 5\sqrt{2} \sin \frac{\pi}{3} = 5\sqrt{2} \times \frac{\sqrt{3}}{2} = 5\sqrt{3/2} \text{ A}$$

**Q. 2** An alternating current generator has an internal resistance  $R_g$  and an internal reactance  $X_g$ . It is used to supply power to a passive load consisting of a resistance  $R_g$  and a reactance  $X_L$ . For maximum power to be delivered from the generator to the load, the value of  $X_L$  is equal to

- (a) zero (b)  $X_g$   
(c)  $-X_g$  (d)  $R_g$

**Ans. (c)** For delivering maximum power from the generator to the load, total internal reactance must be equal to conjugate of total external reactance.

Hence,  $X_{\text{int}} = {}^*X_{\text{ext}}$   
 $\Rightarrow X_g = (X_L)^* = -X_L$   
 $\Rightarrow X_L = -X_g$

**Q. 3** When a voltage measuring device is connected to AC mains, the meter shows the steady input voltage of 220 V. This means

- (a) input voltage cannot be AC voltage, but a DC voltage
- (b) maximum input voltage is 220 V
- (c) the meter reads not  $v$  but  $\langle v^2 \rangle$  and is calibrated to read  $\sqrt{\langle v^2 \rangle}$
- (d) the pointer of the meter is stuck by some mechanical defect

**Ans. (c)** The voltmeter connected to AC mains reads mean value ( $\langle v^2 \rangle$ ) and is calibrated in such a way that it gives value of  $\sqrt{\langle v^2 \rangle}$ , which is multiplied by form factor to give rms value.

**Q. 4** To reduce the resonant frequency in an  $L$ - $C$ - $R$  series circuit with a generator

- (a) the generator frequency should be reduced
- (b) another capacitor should be added in parallel to the first
- (c) the iron core of the inductor should be removed
- (d) dielectric in the capacitor should be removed

**Ans. (b)** We know that resonant frequency in an  $L$ - $C$ - $R$  circuit is given by

$$v_0 = \frac{1}{2\pi\sqrt{LC}}$$

Now to reduce  $v_0$  either we can increase  $L$  or we can increase  $C$ .

To increase capacitance, we must connect another capacitor parallel to the first.

**Q. 5** Which of the following combinations should be selected for better tuning of an  $L$ - $C$ - $R$  circuit used for communication?

- (a)  $R = 20 \Omega$ ,  $L = 15 \text{ H}$ ,  $C = 35 \mu\text{F}$
- (b)  $R = 25 \Omega$ ,  $L = 2.5 \text{ H}$ ,  $C = 45 \mu\text{F}$
- (c)  $R = 15 \Omega$ ,  $L = 3.5 \text{ H}$ ,  $C = 30 \mu\text{F}$
- (d)  $R = 25 \Omega$ ,  $L = 15 \text{ H}$ ,  $C = 45 \mu\text{F}$

**K Thinking Process**

*For better tuning of an  $L$ - $C$ - $R$  circuit used for communication, quality factor of the circuit must be as high as possible.*

**Ans. (c)** Quality factor ( $Q$ ) of an  $L$ - $C$ - $R$  circuit is given by,

$$Q = \frac{1}{R} \sqrt{\frac{L}{C}}$$

where  $R$  is resistance,  $L$  is inductance and  $C$  is capacitance of the circuit. To make  $Q$  high,

$R$  should be low,  $L$  should be high and  $C$  should be low.

These conditions are best satisfied by the values given in option (c).

**Note** We should be careful while writing formula for quality factor, because we are considering series  $L$ - $C$ - $R$  circuit.

**Q. 6** An inductor of reactance  $1\Omega$  and a resistor of  $2\Omega$  are connected in series to the terminals of a  $6\text{V}$  (rms) AC source. The power dissipated in the circuit is

- (a)  $8\text{ W}$  (b)  $12\text{ W}$   
 (c)  $14.4\text{ W}$  (d)  $18\text{ W}$

**Ans. (c)** Given,  $X_L = 1\Omega$ ,  $R = 2\Omega$

$$E_{\text{rms}} = 6\text{V}, P_{\text{av}} = ?$$

Average power dissipated in the circuit

$$P_{\text{av}} = E_{\text{rms}} I_{\text{rms}} \cos \phi \quad \dots(i)$$

$$I_{\text{rms}} = \frac{I_0}{\sqrt{2}} = \frac{E_{\text{rms}}}{Z}$$

$$Z = \sqrt{R^2 + X_L^2}$$

$$= \sqrt{4 + 1} = \sqrt{5}$$

$$I_{\text{rms}} = \frac{6}{\sqrt{5}}\text{ A}$$

$$\cos \phi = \frac{R}{Z} = \frac{2}{\sqrt{5}}$$

$$P_{\text{av}} = 6 \times \frac{6}{\sqrt{5}} \times \frac{2}{\sqrt{5}} \quad \text{[from Eq. (i)]}$$

$$= \frac{72}{\sqrt{5}\sqrt{5}} = \frac{72}{5} = 14.4\text{ W}$$

**Q. 7** The output of a step-down transformer is measured to be  $24\text{ V}$  when connected to a  $12\text{ W}$  light bulb. The value of the peak current is

- (a)  $1/\sqrt{2}\text{ A}$  (b)  $\sqrt{2}\text{ A}$   
 (c)  $2\text{ A}$  (d)  $2\sqrt{2}\text{ A}$

**Ans. (a)** Secondary voltage  $V_S = 24\text{V}$

Power associated with secondary  $P_S = 12\text{ W}$

$$I_S = \frac{P_S}{V_S} = \frac{12}{24}$$

$$= \frac{1}{2}\text{ A} = 0.5\text{ A}$$

Peak value of the current in the secondary

$$I_0 = I_S \sqrt{2}$$

$$= (0.5)(1.414) = 0.707 = \frac{1}{\sqrt{2}}\text{ A}$$

## Multiple Choice Questions (More Than One Options)

**Q. 8** As the frequency of an AC circuit increases, the current first increases and then decreases. What combination of circuit elements is most likely to comprise the circuit?

- (a) Inductor and capacitor  
 (b) Resistor and inductor  
 (c) Resistor and capacitor  
 (d) Resistor, inductor and capacitor

**K Thinking Process**

We can decide the elements, comprising the given circuit by predicting the variation in their reactances with frequency.

**Ans. (a, d)**

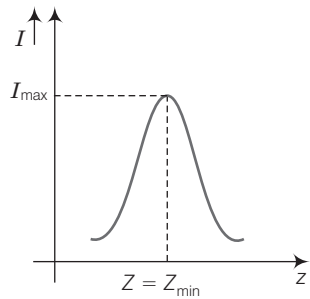
Reactance of an inductor of inductance  $L$  is,  $X_L = 2\pi\nu L$  where  $\nu$  is frequency of the AC circuit.

$$X_C = \text{Reactance of the capacitive circuit} \\ = \frac{1}{2\pi fC}$$

On increasing frequency  $\nu$ , clearly  $X_L$  increases and  $X_C$  decreases.

For a  $L$ - $C$ - $R$  circuit,

$$Z = \text{Impedance of the circuit} \\ = \sqrt{R^2 + (X_L - X_C)^2} \\ = \sqrt{R^2 + \left(2\pi\nu L - \frac{1}{2\pi\nu C}\right)^2}$$



As frequency ( $\nu$ ) increases,  $Z$  decreases and at certain value of frequency know as resonant frequency ( $\nu_0$ ), impedance  $Z$  is minimum that is  $Z_{\min} = R$  current varies inversely with impedance and at  $Z_{\min}$  current is maximum.

**Q. 9** In an alternating current circuit consisting of elements in series, the current increases on increasing the frequency of supply. Which of the following elements are likely to constitute the circuit?

- (a) Only resistor  
 (b) Resistor and an inductor  
 (c) Resistor and a capacitor  
 (d) Only a capacitor

**Ans. (c, d)**

According to the question, the current increases on increasing the frequency of supply. Hence, the reactance of the circuit must be decreases as increasing frequency.

For a capacitive circuit,

$$X_C = \frac{1}{\omega C} = \frac{1}{2\pi fC}$$

Clearly when frequency increases,  $X_C$  decreases.

For  $R$ - $C$  circuit,

$$X = \sqrt{R^2 + \left(\frac{1}{\omega C}\right)^2}$$

when frequency increases  $X$  decreases.

**Q. 10** Electrical energy is transmitted over large distances at high alternating voltages. Which of the following statements is (are) correct?

- (a) For a given power level, there is a lower current
- (b) Lower current implies less power loss
- (c) Transmission lines can be made thinner
- (d) It is easy to reduce the voltage at the receiving end using step-down transformers

**K Thinking Process**

Power loss due to transmission lines having resistance ( $R$ ) and rms current flowing  $I_{rms}$  is  $I_{rms}^2 R$ .

**Ans. (a, b, d)**

We have to transmit energy (power) over large distances at high alternating voltages, so current flowing through the wires will be low because for a given power ( $P$ ).

$$P = E_{rms} I_{rms}, I_{rms} \text{ is low when } E_{rms} \text{ is high.}$$

$$\text{Power loss} = I_{rms}^2 R = \text{low} \quad (\because I_{rms} \text{ is low})$$

Now at the receiving end high voltage is reduced by using step-down transformers.

**Q. 11** For a  $L$ - $C$ - $R$  circuit, the power transferred from the driving source to the driven oscillator is  $P = I^2 Z \cos \phi$ .

- (a) Here, the power factor  $\cos \phi \geq 0, P \geq 0$
- (b) The driving force can give no energy to the oscillator ( $P = 0$ ) in some cases
- (c) The driving force cannot syphon out ( $P < 0$ ) the energy out of oscillator
- (d) The driving force can take away energy out of the oscillator

**Ans. (a, b, c)**

According to question power transferred,

$$P = I^2 Z \cos \phi$$

where  $I$  is the current,  $Z = \text{Impedance}$  and  $\cos \phi$  is power factor

As power factor, 
$$\cos \phi = \frac{R}{Z}$$

where 
$$R > 0 \text{ and } Z > 0$$

$$\Rightarrow \cos \phi > 0 \Rightarrow P > 0$$

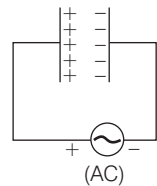
**Q. 12** When an AC voltage of 220 V is applied to the capacitor  $C$

- (a) the maximum voltage between plates is 220 V
- (b) the current is in phase with the applied voltage
- (c) the charge on the plates is in phase with the applied voltage
- (d) power delivered to the capacitor is zero

**Ans. (c, d)**

When the AC voltage is applied to the capacitor, the plate connected to the positive terminal will be at higher potential and the plate connected to the negative terminal will be at lower potential.

The plate with positive charge will be at higher potential and the plate with negative charge will be at lower potential. So, we can say that the charge is in phase with the applied voltage.



Power applied to a circuit is  $P_{av} = V_{rms} I_{rms} \cos \phi$   
 For capacitive circuit,  $\phi = 90^\circ$   
 $\Rightarrow \cos \phi = 0$   
 $\Rightarrow P_{av} = \text{Power delivered} = 0$

**Q. 13** The line that draws power supply to your house from street has

- (a) zero average current
- (b) 220 V average voltage
- (c) voltage and current out of phase by  $90^\circ$
- (d) voltage and current possibly differing in phase  $\phi$  such that  $|\phi| < \frac{\pi}{2}$

**Ans. (a, d)**

For house hold supplies, AC currents are used which are having zero average value over a cycle.

The line is having some resistance so power factor  $\cos \phi = \frac{R}{Z} \neq 0$

so,  $\phi \neq \pi/2 \Rightarrow \phi < \pi/2$   
*i.e.*, phase lies between 0 and  $\pi/2$ .

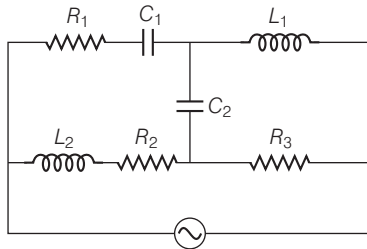
## Very Short Answer Type Questions

**Q. 14** If a  $L$ - $C$  circuit is considered analogous to a harmonically oscillating springblock system, which energy of the  $L$ - $C$  circuit would be analogous to potential energy and which one analogous to kinetic energy?

**Ans.** If we consider a  $L$ - $C$  circuit analogous to a harmonically oscillating springblock system.

The electrostatic energy  $\frac{1}{2} CV^2$  is analogous to potential energy and energy associated with moving charges (current) that is magnetic energy  $\left(\frac{1}{2} LI^2\right)$  is analogous to kinetic energy.

**Q. 15** Draw the effective equivalent circuit of the circuit shown in figure, at very high frequencies and find the effective impedance.



### Thinking Process

The component with infinite resistance will be considered as open circuit and the component with zero resistance will be considered as short circuited.

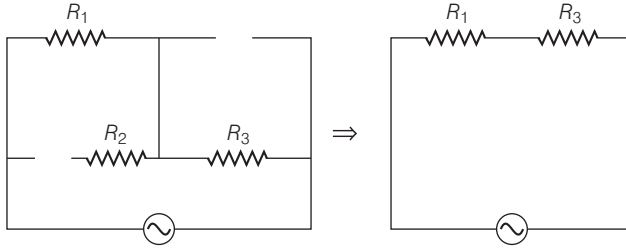
**Ans.** We know that inductive reactance  $X_L = 2\pi fL$

and capacitive reactance  $X_C = \frac{1}{2\pi fC}$

For very high frequencies ( $f \rightarrow \infty$ ),  $X_L \rightarrow \infty$  and  $X_C \rightarrow 0$

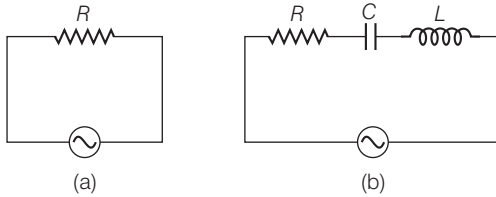
When reactance of a circuit is infinite it will be considered as open circuit. When reactance of a circuit is zero it will be considered as short circuited.

So,  $C_1, C_2 \rightarrow$  shorted and  $L_1, L_2 \rightarrow$  opened.



So, effective impedance  $= R_{eq} = R_1 + R_3$

**Q. 16** Study the circuits (a) and (b) shown in figure and answer the following questions.



(a) Under which conditions would the rms currents in the two circuits be the same?

(b) Can the rms current in circuit (b) be larger than that in (a)?

**Ans.** Let,

$(I_{rms})_a =$  rms current in circuit (a)

$(I_{rms})_b =$  rms current in circuit (b)

$(I_{rms})_a = \frac{V_{rms}}{R} = \frac{V}{R}$

$(I_{rms})_b = \frac{V_{rms}}{Z} = \frac{V}{\sqrt{R^2 + (X_L - X_C)^2}}$

(a) When

$(I_{rms})_a = (I_{rms})_b$

$R = \sqrt{R^2 + (X_L - X_C)^2}$

$\Rightarrow$

$X_L = X_C$ , resonance condition

(b) As  $Z \geq R$

$\Rightarrow$

$\frac{(I_{rms})_a}{(I_{rms})_b} = \frac{\sqrt{R^2 + (X_L - X_C)^2}}{R}$

$= \frac{Z}{R} \geq 1$

$\Rightarrow$

$(I_{rms})_a \geq (I_{rms})_b$

No, the rms current in circuit (b), cannot be larger than that in (a).

**Q. 17** Can the instantaneous power output of an AC source ever be negative?  
Can the average power output be negative?

**Ans.** Let the applied emf

$$E = E_0 \sin(\omega t)$$

and current developed is

$$I = I_0 \sin(\omega t \pm \phi)$$

Instantaneous power output of the AC source

$$\begin{aligned} P &= EI = (E_0 \sin \omega t) [I_0 \sin(\omega t \pm \phi)] \\ &= E_0 I_0 \sin \omega t \cdot \sin(\omega t \pm \phi) \\ &= \frac{E_0 I_0}{2} [\cos \phi - \cos(2\omega t \pm \phi)] \end{aligned} \quad \dots(i)$$

Average power

$$\begin{aligned} P_{av} &= \frac{V_0}{\sqrt{2}} \frac{I_0}{\sqrt{2}} \cos \phi \\ &= V_{rms} I_{rms} \cos \phi \end{aligned} \quad \dots(ii)$$

where  $\phi$  is the phase difference.

Clearly, from Eq. (i)

when

$$\begin{aligned} \cos \phi &< \cos(2\omega t \pm \phi) \\ P &< 0 \end{aligned}$$

Yes, the instantaneous power output of an AC source can be negative

From Eq. (ii)

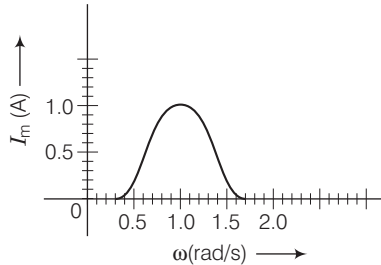
$$P_{av} > 0$$

Because

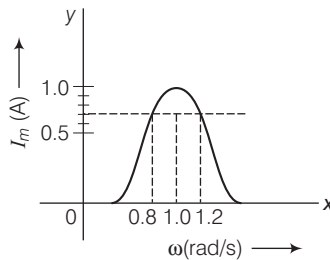
$$\cos \phi = \frac{R}{Z} > 0$$

No, the average power output of an AC source cannot be negative.

**Q. 18** In series *LCR* circuit, the plot of  $I_{max}$  versus  $\omega$  is shown in figure. Find the bandwidth and mark in the figure.



**Ans.** Consider the diagram .  
Bandwidth =  $\omega_2 - \omega_1$



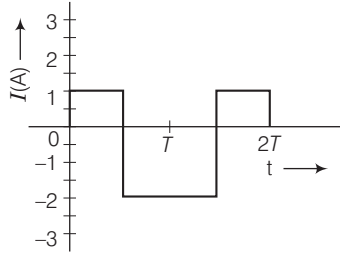


where  $\omega_1$  and  $\omega_2$  corresponds to frequencies at which magnitude of current is  $\frac{1}{\sqrt{2}}$  times of maximum value.

$$I_{\text{rms}} = \frac{I_{\text{max}}}{\sqrt{2}} = \frac{1}{\sqrt{2}} \approx 0.7 \text{ A}$$

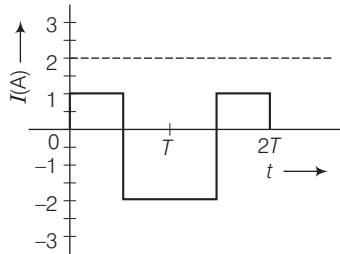
Clearly from the diagram, the corresponding frequencies are 0.8 rad/s and 1.2 rad/s.  
 $\Delta \omega = \text{Bandwidth} = 1.2 - 0.8 = 0.4 \text{ rad/s}$

**Q. 19** The alternating current in a circuit is described by the graph shown in figure. Show rms current in this graph.



**Ans.**  $I_{\text{rms}}$  = rms current

$$= \sqrt{\frac{1^2 + 2^2}{2}} = \sqrt{\frac{5}{2}} = 1.58 \text{ A} \approx 1.6 \text{ A}$$



The rms value of the current ( $I_{\text{rms}}$ ) = 1.6 A is indicated in the graph.

**Q. 20** How does the sign of the phase angle  $\phi$ , by which the supply voltage leads the current in an  $L$ - $C$ - $R$  series circuit, change as the supply frequency is gradually increased from very low to very high values.

**Ans.** The phase angle ( $\phi$ ) by which voltage leads the current in  $L$ - $C$ - $R$  series circuit is given by

$$\tan \phi = \frac{X_L - X_C}{R} = \frac{2\pi\nu L - \frac{1}{2\pi\nu C}}{R}$$

$$\tan \phi < 0 \text{ (for } \nu < \nu_0 \text{)}$$

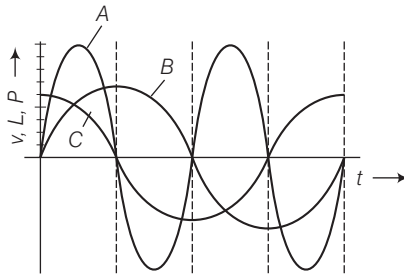
$$\tan \phi > 0 \text{ (for } \nu > \nu_0 \text{)}$$

$$\tan \phi = 0$$

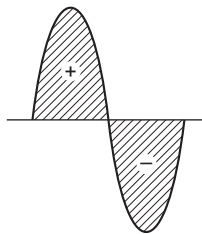
$$\left( \text{for } \nu = \nu_0 = \frac{1}{2\pi\sqrt{LC}} \right)$$

## Short Answer Type Questions

- Q. 21A** A device 'X' is connected to an AC source. The variation of voltage, current and power in one complete cycle is shown in figure.
- Which curve shows power consumption over a full cycle?
  - What is the average power consumption over a cycle?
  - Identify the device X.



- Ans. (a)** We know that  $\text{Power} = P = VI$   
 that is curve of power will be having maximum amplitude, equals to multiplication of amplitudes of voltage ( $V$ ) and current ( $I$ ) curve. So, the curve will be represented by A.
- (b)** As shown by shaded area in the diagram, the full cycle of the graph consists of one positive and one negative symmetrical area.



Hence, average power over a cycle is zero.

- (c)** As the average power is zero, hence the device may be inductor ( $L$ ) or capacitor ( $C$ ) or the series combination of  $L$  and  $C$ .
- Q. 22** Both alternating current and direct current are measured in amperes. But how is the ampere defined for an alternating current?

**Ans.** For a Direct Current (DC),

$$1 \text{ ampere} = 1 \text{ coulomb/sec}$$

An AC current changes direction with the source frequency and the attractive force would average to zero. Thus, the AC ampere must be defined in terms of some property that is independent of the direction of current.

Joule's heating effect is such property and hence it is used to define rms value of AC.

**Q. 23** A coil of 0.01H inductance and  $1\Omega$  resistance is connected to 200 V, 50Hz AC supply. Find the impedance of the circuit and time lag between maximum alternating voltage and current.

**Ans.** Given, inductance  $L = 0.01\text{H}$   
 resistance  $R = 1\Omega$ , voltage  $(V) = 200\text{V}$   
 and frequency  $(f) = 50\text{Hz}$ .

Impedance of the circuit  $Z = \sqrt{R^2 + X_L^2} = \sqrt{R^2 + (2\pi fL)^2}$   
 $= \sqrt{1^2 + (2 \times 3.14 \times 50 \times 0.01)^2}$

or  $Z = \sqrt{10.86} = 3.3\Omega$

$$\tan \phi = \frac{\omega L}{R} = \frac{2\pi fL}{R} = \frac{2 \times 3.14 \times 50 \times 0.01}{1} = 3.14$$

$$\phi = \tan^{-1}(3.14) \approx 72^\circ$$

Phase difference  $\phi = \frac{72 \times \pi}{180}$  rad.

Time lag between alternating voltage and current

$$\Delta t = \frac{\phi}{\omega} = \frac{72\pi}{180 \times 2\pi \times 50} = \frac{1}{250}\text{s}$$

**Q. 24A** 60 W load is connected to the secondary of a transformer whose primary draws line voltage. If a current of 0.54 A flows in the load, what is the current in the primary coil? Comment on the type of transformer being used.

**Ans.** Given,  $P_S = 60\text{W}$ ,  $I_S = 0.54\text{A}$

Current in the primary  $I_p = ?$

Taking line voltage as 220 V.

We can write Since,

$$\Rightarrow P_L = 60\text{W}, I_L = 0.54\text{A}$$

$$\Rightarrow V_L = \frac{60}{0.54} = 110\text{V}. \quad \dots(i)$$

Voltage in the secondary ( $E_S$ ) is less than voltage in the primary ( $E_P$ ).

Hence, the transformer is step down transformer.

Since, the transformation ratio

$$r = \frac{V_s}{V_p} = \frac{I_p}{I_s}$$

Substituting the values,  $\frac{110\text{V}}{220\text{V}} = \frac{I_p}{0.54\text{A}}$

On solving  $I_p = 0.27\text{A}$

**Q. 25** Explain why the reactance provided by a capacitor to an alternating current decreases with increasing frequency.

**Ans.** A capacitor does not allow flow of direct current through it as the resistance across the gap is infinite. When an alternating voltage is applied across the capacitor plates, the plates are alternately charged and discharged. The current through the capacitor is a result of this changing voltage (or charge).

Thus, a capacitor will pass more current through it if the voltage is changing at a faster rate, i.e. if the frequency of supply is higher. This implies that the reactance offered by a capacitor is less with increasing frequency.

Mathematically, the reactance can be written as  $X_C = \frac{1}{\omega C}$ .

**Q. 26** Explain why the reactance offered by an inductor increases with increasing frequency of an alternating voltage.

**Ans.** An inductor opposes flow of current through it by developing a back emf according to Lenz's law. The induced voltage has a polarity so as to maintain the current at its present value. If the current is decreasing, the polarity of the induced emf will be so as to increase the current and *vice-versa*.

Since, the induced emf is proportional to the rate of change of current, it will provide greater reactance to the flow of current if the rate of change is faster, i.e., if the frequency is higher. The reactance of an inductor, therefore, is proportional to the frequency. Mathematically, the reactance offered by the inductor is given by  $X_L = \omega L$ .

## Long Answer Type Questions

**Q. 27** An electrical device draws 2 kW power from AC mains (voltage 223 V (rms) =  $\sqrt{50000}$  V). The current differs (lags) in phase by  $\phi$  ( $\tan \phi = \frac{-3}{4}$ ) as compared to voltage. Find (a)  $R$ , (b)  $X_C - X_L$  and (c)  $I_M$ . Another device has twice the values for  $R$ ,  $X_C$  and  $X_L$ . How are the answers affected?

### ✶ Thinking Process

*We have to apply the formula for phase relation, net reactance as well as instantaneous power associate with the circuit in terms of voltage and current.*

**Ans.** Given, power drawn =  $P = 2\text{kW} = 2000\text{ W}$

$$\tan \phi = -\frac{3}{4}, I_M = I_0 = ?, R = ?, X_C - X_L = ?$$

$$V_{\text{rms}} = V = 223\text{ V}$$

$$\text{Power } P = \frac{V^2}{Z}$$

$$\Rightarrow Z = \frac{V^2}{P} = \frac{223 \times 223}{2 \times 10^3} = 25$$

$$\text{Impedance } Z = 25 \Omega$$

$$\text{Impedance } Z = \sqrt{R^2 + (X_L - X_C)^2}$$

$$\Rightarrow 25 = \sqrt{R^2 + (X_L - X_C)^2}$$

$$\text{or } 625 = R^2 + (X_L - X_C)^2 \quad \dots(i)$$

$$\text{Again, } \tan \phi = \frac{X_L - X_C}{R} = \frac{3}{4}$$

$$\text{or } X_L - X_C = \frac{3R}{4} \quad \dots(ii)$$

From Eq. (ii), we put  $X_L - X_C = \frac{3R}{4}$  in Eq. (i), we get

$$625 = R^2 + \left(\frac{3R}{4}\right)^2 = R^2 + \frac{9R^2}{16}$$

or 
$$625 = \frac{25R^2}{16}$$

(a) Resistance  $R = \sqrt{25 \times 16} = \sqrt{400} = 20\Omega$

(b)  $X_L - X_C = \frac{3R}{4} = \frac{3}{4} \times 20 = 15\Omega$

(c) Main current  $I_M = \sqrt{2}I = \sqrt{2} \frac{V}{Z} = \frac{223}{25} \times \sqrt{2} = 12.6 \text{ A}$

As  $R, X_C, X_L$  are all doubled,  $\tan\phi$  does not change.  $Z$  is doubled, current is halved. So, power is also halved.

**Q. 28** 1 MW power is to be delivered from a power station to a town 10 km away. One uses a pair of Cu wires of radius 0.5 cm for this purpose. Calculate the fraction of ohmic losses to power transmitted if

(i) power is transmitted at 220V. Comment on the feasibility of doing this.

(ii) a step-up transformer is used to boost the voltage to 11000V, power transmitted, then a step-down transformer is used to bring voltage to 220 V. ( $\rho_{\text{Cu}} = 1.7 \times 10^{-8}$  SI unit)

**Ans.** (i) The town is 10 km away, length of pair of Cu wires used,  $L = 20 \text{ km} = 20000 \text{ m}$ .

Resistance of Cu wires, 
$$R = \frac{l}{A} = \frac{l}{\pi (r)^2}$$

$$= \frac{1.7 \times 10^{-8} \times 20000}{3.14 (0.5 \times 10^{-2})^2} = 4\Omega$$

$I$  at 220 V 
$$VI = 10^6 \text{ W}; I = \frac{10^6}{220} = 0.45 \times 10^4 \text{ A}$$

$RI^2 = \text{power loss}$ 

$$= 4 \times (0.45)^2 \times 10^8 \text{ W}$$

$$> 10^6 \text{ W}$$

Therefore, this method cannot be used for transmission.

(ii) When power  $P = 10^6 \text{ W}$  is transmitted at 11000 V.

$$V'I' = 10^6 \text{ W} = 11000 I'$$

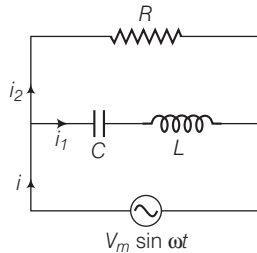
Current drawn,  $I' = \frac{1}{11} \times 10^2$

Power loss  $= RI'^2 = \frac{1}{121} \times 4 \times 10^4$ 

$$= 3.3 \times 10^4 \text{ W}$$

Fraction of power loss  $= \frac{3.3 \times 10^4}{10^6} = 3.3\%$

**Q. 29** Consider the  $L$ - $C$ - $R$  circuit shown in figure. Find the net current  $i$  and the phase of  $i$ . Show that  $i = \frac{V}{Z}$ . Find the impedance  $Z$  for this circuit.



**K Thinking Process**

The circuit consists of inductor ( $L$ ) and capacitor ( $C$ ) connected in series and the combination is connected parallel with a resistance  $R$ . Due to this combination there is oscillation of electromagnetic energy.

**Ans.** In the given figure  $i$  is the total current from the source. It is divided into two parts  $i_1$  through  $R$  and  $i_2$  through series combination of  $C$  and  $L$ .

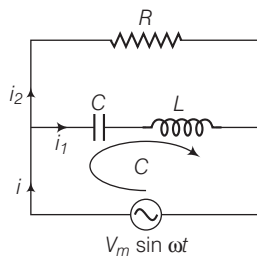
So, we can write  $i = i_1 + i_2$

As, 
$$V_m \sin \omega t = R i_1 \quad \text{[from the circuit diagram]}$$

$$\Rightarrow i_1 = \frac{V_m \sin \omega t}{R} \quad \dots(i)$$

If  $q_2$  is charge on the capacitor at any time  $t$ , then for series combination of  $C$  and  $L$ .

Applying KVL in the Lower circuit as shown,



$$\frac{q_2}{C} + \frac{L di_2}{dt} - V_m \sin \omega t = 0$$

$$\Rightarrow \frac{q_2}{C} + \frac{L d^2 q_2}{dt^2} = V_m \sin \omega t \quad \left[ \because i_2 = \frac{dq_2}{dt} \right] \dots (ii)$$

Let  $q_2 = q_m \sin(\omega t + \phi) \quad \dots (iii)$

$\therefore \frac{dq_2}{dt} = q_m \omega \cos(\omega t + \phi)$

$$\Rightarrow \frac{d^2 q_2}{dt^2} = -q_m \omega^2 \sin(\omega t + \phi)$$

Now putting these values in Eq. (ii), we get

$$q_m \left[ \frac{1}{C} + L(-\omega^2) \right] \sin(\omega t + \phi) = V_m \sin \omega t$$

If  $\phi = 0$  and  $\left(\frac{1}{C} - L\omega^2\right) > 0$ ,

then

$$q_m = \frac{V_m}{\left(\frac{1}{C} - L\omega^2\right)} \quad \dots(\text{iv})$$

From Eq. (iii),

$$i_2 = \frac{dq_2}{dt} = \omega q_m \cos(\omega t + \phi)$$

using Eq. (iv),

$$i_2 = \frac{\omega V_m \cos(\omega t + \phi)}{\frac{1}{C} - L\omega^2}$$

$$\text{Taking } \phi = 0; i_2 = \frac{V_m \cos(\omega t)}{\left(\frac{1}{\omega C} - L\omega\right)} \quad \dots(\text{v})$$

From Eqs. (i) and (v), we find that  $i_1$  and  $i_2$  are out of phase by  $\frac{\pi}{2}$ .

Now,

$$i_1 + i_2 = \frac{V_m \sin \omega t}{R} + \frac{V_m \cos \omega t}{\left(\frac{1}{\omega C} - L\omega\right)}$$

Put

$$\frac{V_m}{R} = A = C \cos \phi \quad \text{and} \quad \frac{V_m}{\left(\frac{1}{\omega C} - L\omega\right)} = B = C \sin \phi$$

$\therefore$

$$i_1 + i_2 = C \cos \phi \sin \omega t + C \sin \phi \cos \omega t \\ = C \sin(\omega t + \phi)$$

where

$$C = \sqrt{A^2 + B^2}$$

and

$$\phi = \tan^{-1} \frac{B}{A} = \left[ \frac{V_m^2}{R^2} + \frac{V_m^2}{\left(\frac{1}{\omega C} - L\omega\right)^2} \right]^{1/2}$$

and

$$\phi = \tan^{-1} \frac{R}{\left(\frac{1}{\omega C} - L\omega\right)}$$

Hence,

$$i = i_1 + i_2 = \left[ \frac{V_m^2}{R^2} + \frac{V_m^2}{\left(\frac{1}{\omega C} - L\omega\right)^2} \right]^{1/2} \sin(\omega t + \phi)$$

or

$$\frac{i}{V_m} = \frac{1}{Z} = \left[ \frac{1}{R^2} + \frac{1}{\left(\frac{1}{\omega C} - L\omega\right)^2} \right]^{1/2}$$

This is the expression for impedance  $Z$  of the circuit.

**Note** In this problem, we should not apply the formulae of L-C-R series circuit directly.

**Q. 30** For a  $L$ - $C$ - $R$  circuit driven at frequency  $\omega$ , the equation reads

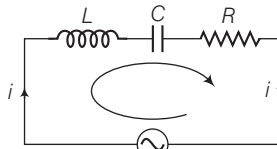
$$L \frac{di}{dt} + Ri + \frac{q}{C} = V_i = V_m \sin \omega t$$

- Multiply the equation by  $i$  and simplify where possible.
- Interpret each term physically.
- Cast the equation in the form of a conservation of energy statement.
- Integrate the equation over one cycle to find that the phase difference between  $V$  and  $i$  must be acute.

**K Thinking Process**

Apply KVL for the given  $L$ - $C$ - $R$  series circuit and find the required relations. Also find energy loss through the resistors to know net loss of energy through the circuit.

**Ans.** Consider the  $L$ - $C$ - $R$  circuit. Applying KVL for the loop, we can write



$$V = V_m \sin \omega t$$

$$\Rightarrow L \frac{di}{dt} + \frac{q}{C} + iR = V_m \sin \omega t \quad \dots (i)$$

Multiplying both sides by  $i$ , we get

$$Li \frac{di}{dt} + \frac{q}{C} i + i^2 R = (V_m i) \sin \omega t = Vi \quad \dots (ii)$$

where  $Li \frac{di}{dt} = \frac{d}{dt} \left( \frac{1}{2} Li^2 \right)$  = rate of change of energy stored in an inductor.

$Ri^2$  = joule heating loss

$\frac{q}{C} i = \frac{d}{dt} \left( \frac{q^2}{2C} \right)$  = rate of change of energy stored in the capacitor.

$Vi$  = rate at which driving force pours in energy. It goes into (i) ohmic loss and (ii) increase of stored energy.

Hence Eq. (ii) is in the form of conservation of energy statement. Integrating both sides of Eq. (ii) with respect to time over one full cycle ( $0 \rightarrow T$ ) we may write

$$\int_0^T \frac{d}{dt} \left( \frac{1}{2} Li^2 + \frac{q^2}{2C} \right) dt + \int_0^T Ri^2 dt = \int_0^T Vi dt$$

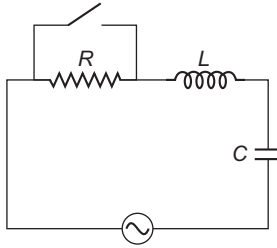
$$\Rightarrow 0 + (+ve) = \int_0^T Vi dt$$

$\Rightarrow \int_0^T Vi dt > 0$  if phase difference between  $V$  and  $i$  is a constant and acute angle.



**Q. 31** In the  $L$ - $C$ - $R$  circuit, shown in figure the AC driving voltage is  $V = V_m \sin \omega t$ .

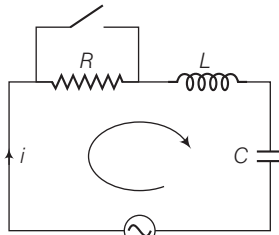
- Write down the equation of motion for  $q(t)$ .
- At  $t = t_0$ , the voltage source stops and  $R$  is short circuited. Now write down how much energy is stored in each of  $L$  and  $C$ .
- Describe subsequent motion of charges.



**K Thinking Process**

We have to apply KVL write the equations in the form of current and charge double differentiate the equation with respect to time and find the required relations.

**Ans. (a)** Consider the  $R$ - $L$ - $C$  circuit shown in the adjacent diagram.



$$V = V_m \sin \omega t$$

$$V = V_m \sin \omega t$$

Given

Let current at any instant be  $i$

Applying KVL in the given circuit

$$iR + L \frac{di}{dt} + \frac{q}{C} - V_m \sin \omega t = 0 \quad \dots(i)$$

Now, we can write

$$i = \frac{dq}{dt} \Rightarrow \frac{di}{dt} = \frac{d^2q}{dt^2}$$

From Eq. (i)

$$\frac{dq}{dt} R + L \frac{d^2q}{dt^2} + \frac{q}{C} = V_m \sin \omega t$$

$\Rightarrow$

$$L \frac{d^2q}{dt^2} + R \frac{dq}{dt} + \frac{q}{C} = V_m \sin \omega t$$

This is the required equation of variation (motion) of charge.

(b) Let  $q = q_m \sin(\omega t + \phi) = -q_m \cos(\omega t + \phi)$

$$i = i_m \sin(\omega t + \phi) = q_m \omega \sin(\omega t + \phi)$$

$$i_m = \frac{V_m}{Z} = \frac{V_m}{\sqrt{R^2 + (X_C - X_L)^2}}$$

$$\phi = \tan^{-1} \left( \frac{X_C - X_L}{R} \right)$$

When  $R$  is short circuited at  $t = t_0$ , energy is stored in  $L$  and  $C$ .

$$U_L = \frac{1}{2} Li^2 = \frac{1}{2} L \left[ \frac{V_m}{\sqrt{(R^2 + X_C - X_L)^2}} \right]^2 \sin^2(\omega t_0 + \phi)$$

and

$$U_C = \frac{1}{2} \times \frac{q^2}{C} = \frac{1}{2C} [q^2 m \cos^2(\omega t_0 + \phi)]$$

$$= \frac{1}{2C} \left[ \frac{V_m}{\sqrt{R^2 + (X_C - X_L)^2}} \right]^2$$

$$= \frac{1}{2C} \times \left( \frac{i_m}{\omega} \right)^2 \cos^2(\omega t_0 + \phi)$$

$$= \frac{i_m^2 m}{2C\omega^2} \cos^2(\omega t_0 + \phi)$$

$$[\because i_m = q_m \omega]$$

$$= \frac{1}{2C} \left[ \frac{V_m}{\sqrt{R^2 + (X_C - X_L)^2}} \right]^2 \frac{\cos^2(\omega t_0 + \phi)}{\omega^2}$$

$$= \frac{1}{2C\omega^2} \left[ \frac{V_m}{\sqrt{R^2 + (X_C - X_L)^2}} \right]^2 \cos^2(\omega t_0 + \phi)$$

(c) When  $R$  is short circuited, the circuit becomes an  $L$ - $C$  oscillator. The capacitor will go on discharging and all energy will go to  $L$  and back and forth. Hence, there is oscillation of energy from electrostatic to magnetic and magnetic to electrostatic.